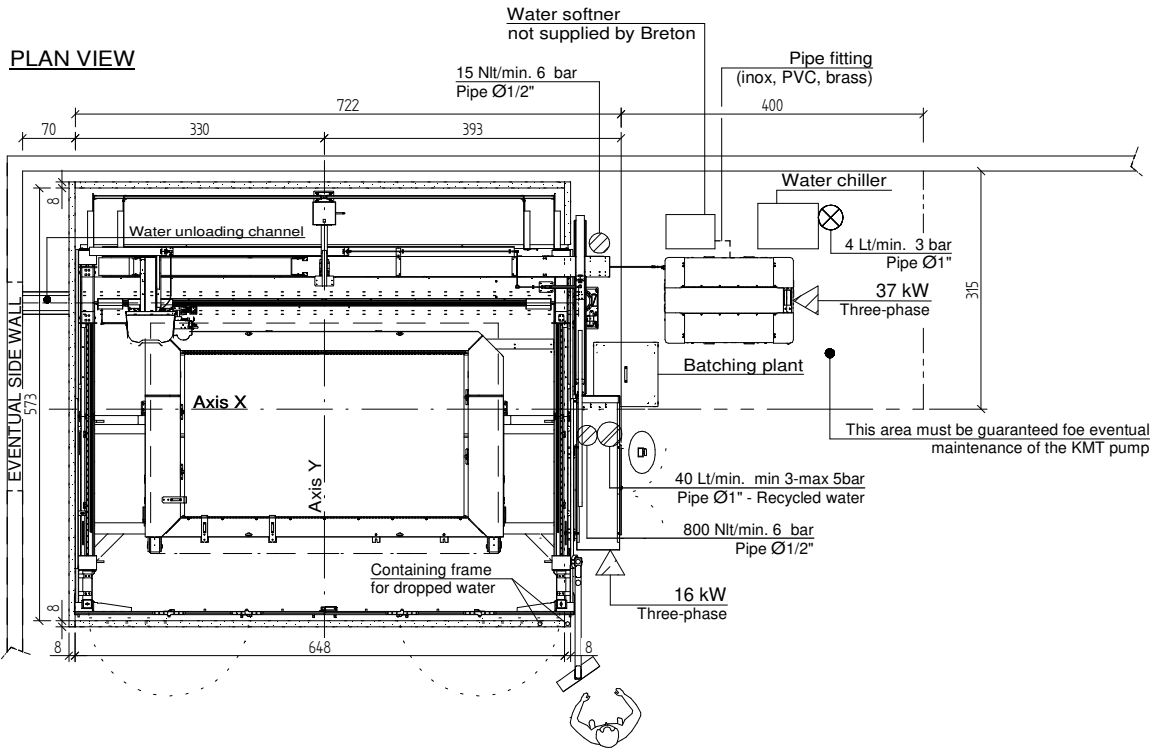
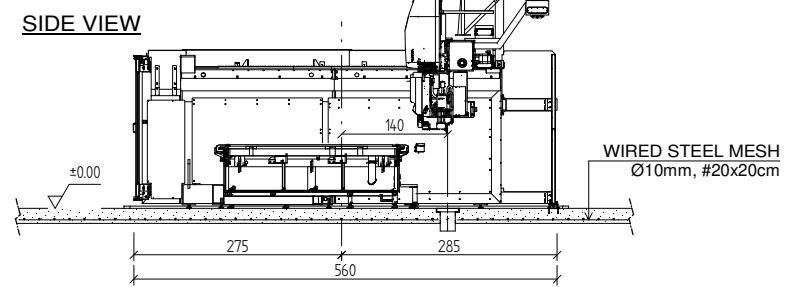
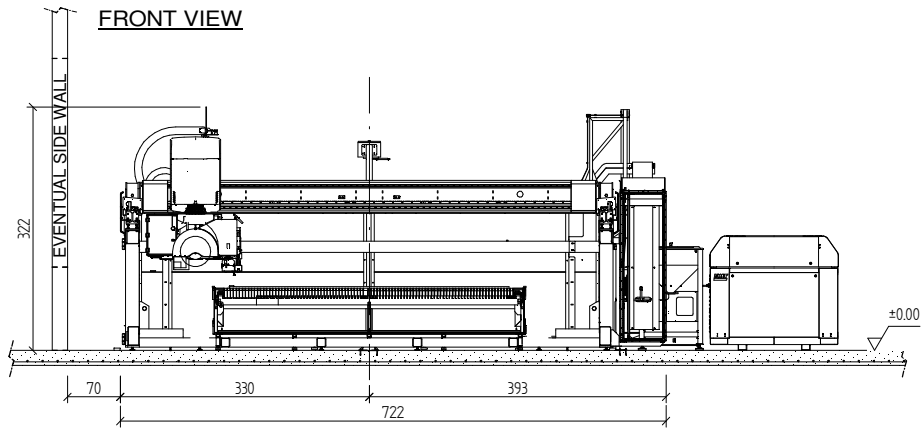


OPERATING VOLTAGE	480V - 60Hz	▲	FEEDING POINT ON DISTRIBUTION BOARD
OPERATING PRESSURE	: 3 bar	▨	POWER CONTROL BOARD
OPERATING PRESSURE	: 3 bar	⊗	WATER WITH SPECIFIED CHARACTERISTICS TO CONTRACT
Ø PIPE CONNECTION TO THE MACHINE: INCH		⊙	CLEAN WATER SUPPLY OR RECYCLED WATER FILTERED AT 50 micron
OPERATING PRESSURE	: 3-5 bar	●	COMPRESSED AIR SUPPLY (DRYED, OILFREE, FILTERED AT 5 micron)
Ø PIPE CONNECTION TO THE MACHINE: INCH		⊕	NETWORK CONNECTION (INTERNET)
<p>N.B. ⚡ ALL THE ELETTRIC CONTROL BOARD MUST BE EARTHED BY MEANS OF AN ADEGUATE GROUND CABLE</p>			



**SOIL PRESCRIPTION**

CONCRETE SLAB: concrete class min. C20/25 (Rck=250 daN/cm<sup>2</sup>)  
min. thickness = 15cm  
WIRED STEEL MESH Ø10mm, #20x20cm  
STEEL REINFORCEMENT type B450C (fyk=4500 daN/cm<sup>2</sup>)

**SOIL PRESCRIPTION**

THE STEEL PROFILE 80x30mm FOR THE DROPPED WATER CONTAINING IS NOT INCLUDED IN BREON SUPPLY.  
THE FRAME MUST BE FIXED TO THE SOIL WITH EXPANSION BOLTS (ABOUT ONE EACH 40cm) NOT INCLUDED IN THE MACHINE SUPPLY.  
THE FRAME MUST BE SEALED TO THE SOIL BY MEAN OF SILICONE.  
THE RUBBER HOSES, USEFUL FOR DRAINING WATER FROM THE MACHINE TO THE WATER COLLECTING CHANNEL, ARE NOT INCLUDED IN BRETON SUPPLY.

ALL DIMENSIONS ARE IN cm EXCEPT WHEN OTHERWISE INDICATED

0	Prima Emissione					
REVISIONE	DESCRIZIONE MODIFICA	DATA	DISEGNATO	CONTROLLATO	APPROVATO	
REVISION	MODIFIED DESCRIPTION	DATE	DRAWN	CONTROLLED	APPROVED	
<p>Driven by Innovation</p>						ORDINE N°/ORDER N°:
CLIENTE : CUSTOMER						
DENOMINAZIONE/DESCRIPTION:				N° DISEGNO/N° DRAWING:		REV:
COMBICUT MONOBLOCK						0
GENERAL LAYOUT				SCALA/SCALE:		UM: FOGLIO/SHEET:
				1:50		cm 1 / 1
<p>Ogni diritto sui contenuti del presente documento appartiene a Breton S.p.A. ed e' riservato ai sensi della normativa vigente. La riproduzione, la pubblicazione, la divulgazione e la distribuzione, totale o parziale, di tutto il materiale contenuto in questo documento sono espressamente vietate in assenza di autorizzazione scritta di Breton S.p.A. All contents within this document are copyrighted by and belong to Breton S.p.A. All rights are reserved under the regulations in force. No part of this document may be reproduced, published, disclosed or distributed, either partially or entirely, without the prior written consent of Breton S.p.A.</p>						TAVOLA: FORMAT: A2
STATO DOCUMENTO: APPROVATO						